

M. G. Lubbock

1874

JUANITA,

Popular Song,

BY THE

HONBLE MRS NORTON,

ARRANGED FOR THE

Piano Forte,

BY

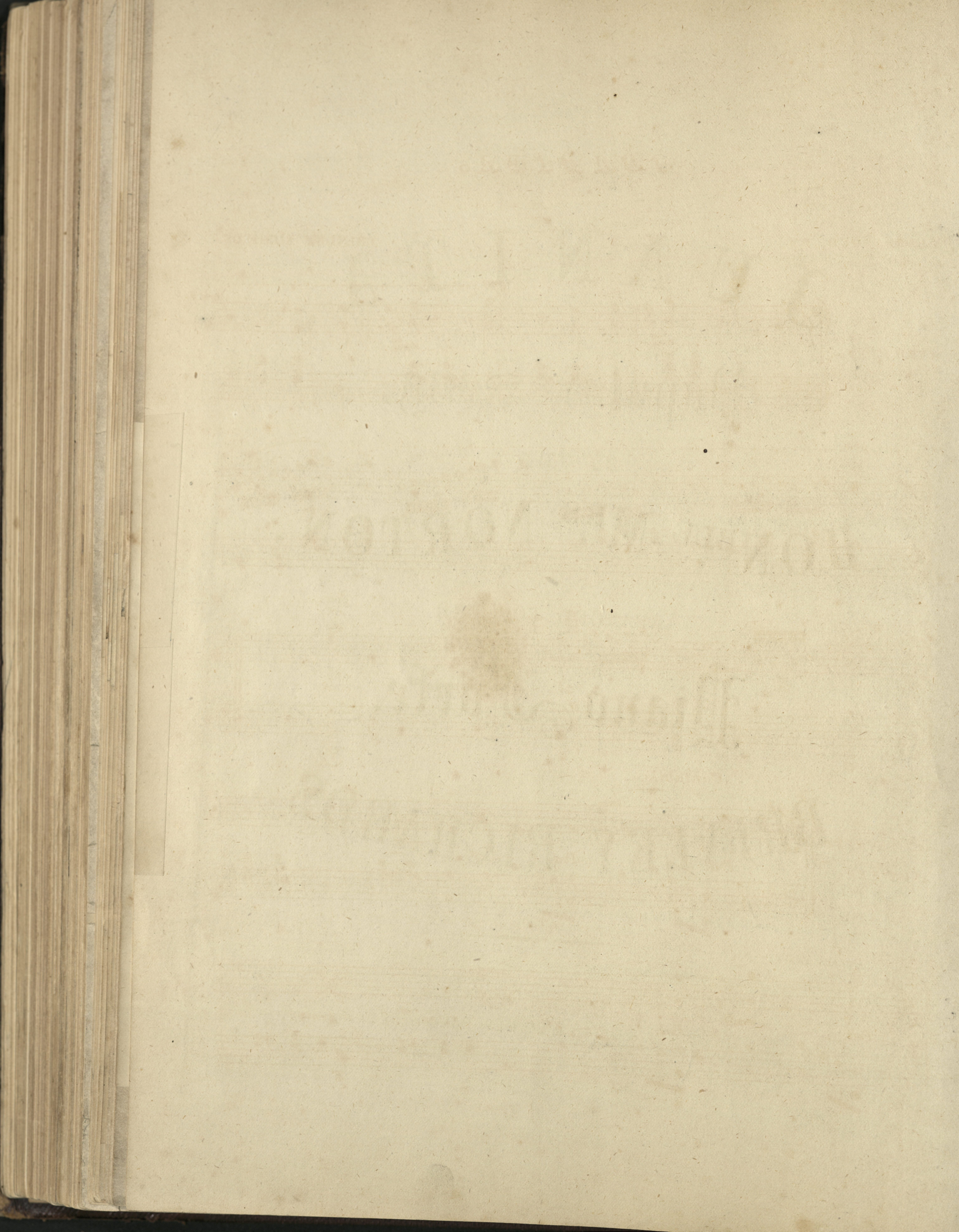
BRINLEY RICHARDS.

Ent. Sta. Hall.

Price 3^s/-

LONDON,
CHAPPELL & CO 49 & 50, NEW BOND STREET.





JUANITA.

ARRANGED BY

BRINLEY RICHARDS.

ANIMATO.

f *gva*

gva

ral: a tempo. *gva*

Cantabile.

ANDANTINO
CON ESP:

Ped. *Ped.*

Ped. *Ped.* *riten: a tempo.*

Musical notation system 1. Treble clef, key signature of one sharp (F#). The system contains two staves. The upper staff has a melodic line with slurs and accents. The lower staff has a bass line with a 'Ped:' marking and an asterisk. A 'p' dynamic marking is present in the upper staff, and 'ral.' is written below the lower staff.

Musical notation system 2. Treble clef, key signature of one sharp (F#). The system contains two staves. The upper staff has a melodic line with slurs and accents. The lower staff has a bass line with a 'Ped:' marking and an asterisk. Dynamics include 'Cres.', 'a tempo.', 'ral.', 'dim.', and 'a tempo.'. The system ends with a 'stacc.' marking and a '3' indicating a triplet.

Musical notation system 3. Treble clef, key signature of one sharp (F#). The system contains two staves. The upper staff has a melodic line with slurs and accents. The lower staff has a bass line with a 'Ped:' marking and an asterisk. A 'p' dynamic marking is present in the upper staff.

Musical notation system 4. Treble clef, key signature of one sharp (F#). The system contains two staves. The upper staff has a melodic line with slurs and accents, including triplets and a 'pp' dynamic marking. The lower staff has a bass line with a 'Ped:' marking and an asterisk. Dynamics include 'ral.', 'a tempo.', and 'Ped:'.

Musical notation system 5. Treble clef, key signature of one sharp (F#). The system contains two staves. The upper staff has a melodic line with slurs and accents, including triplets and a 'f' dynamic marking. The lower staff has a bass line with a 'Ped:' marking and an asterisk.

gva

Ped:

gva

Ped:

p

Ped:

marcato il basso.

Ped:

gva

2 + + 1

4 3

gva

+ 2 1

Ped:

Dim: e rall:

a tempo.

gva

+ 2 1 2 +

1 2 1 +

1 1 +

1 2 1 2 +

Ped:

Ped:

4

f *gva*
Ped. *

gva
Ped. * *Ped.* *

gva *pp*
Ped. *ral.* * *a tempo.*
Ped. *ben marcato.* *

Ped. *Ped.* *

f *Ped.* * *Ped.* *

Ped. *Ped.* *

Musical score for piano, consisting of six systems of two staves each. The notation includes various musical symbols such as notes, rests, beams, and dynamic markings. Key markings include:

- System 1:** Pedal markings (Ped:) and articulation (>).
- System 2:** Ritardando (gva) and a tempo change (ral:).
- System 3:** Dynamic marking *f con spirito*, pedal markings, and fingerings (3 2, 1 +, 3, 3, + 2).
- System 4:** Pedal markings and fingerings (+ 3).
- System 5:** Accelerando (accel.) and fortissimo (ff) markings.
- System 6:** Ritardando (gva) and final cadence.